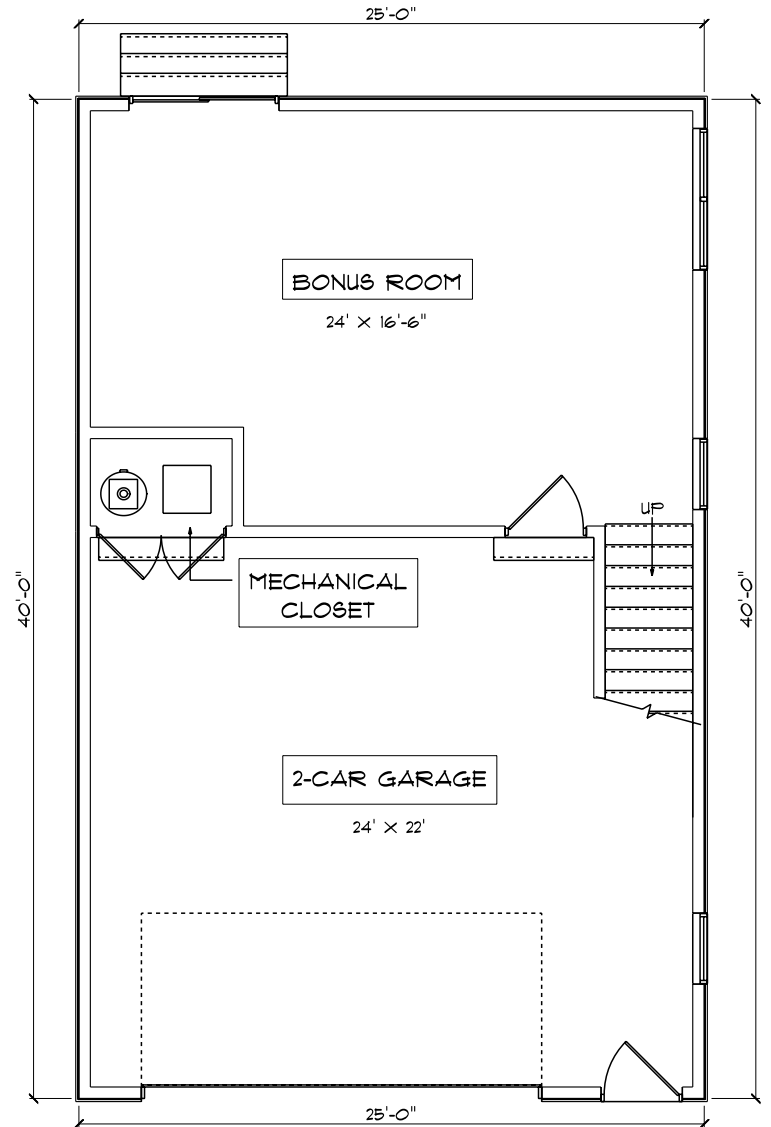


BAY VIEW

2,246 SQFT.



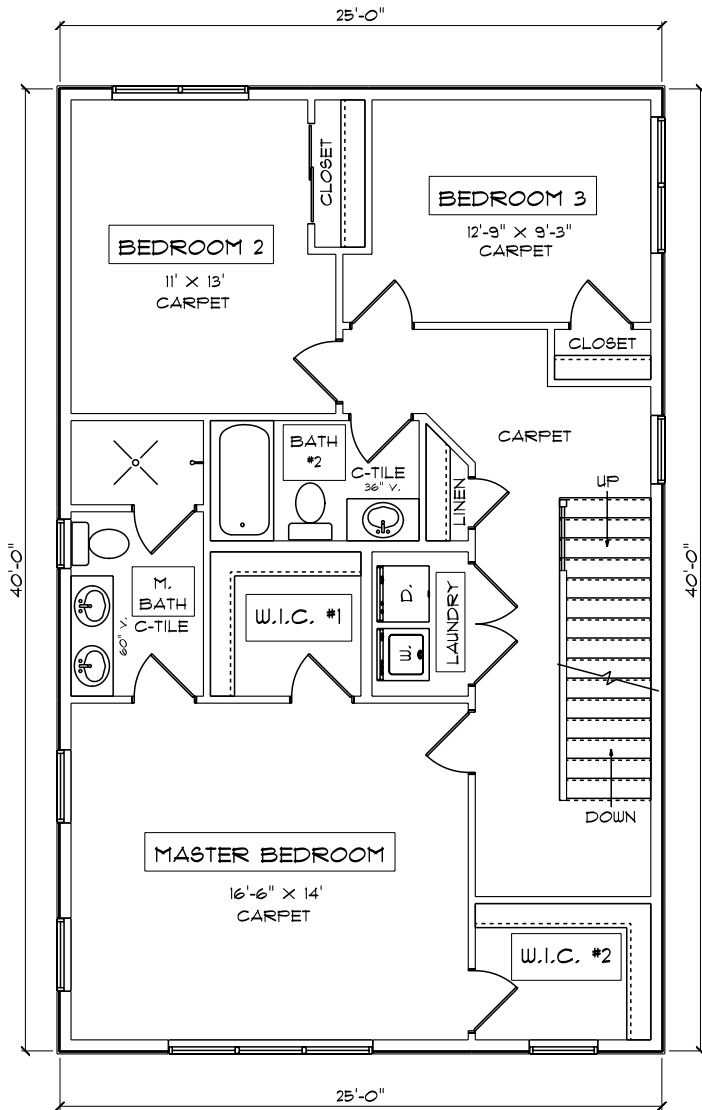
FRONT ELEVATION



GROUND FLOOR

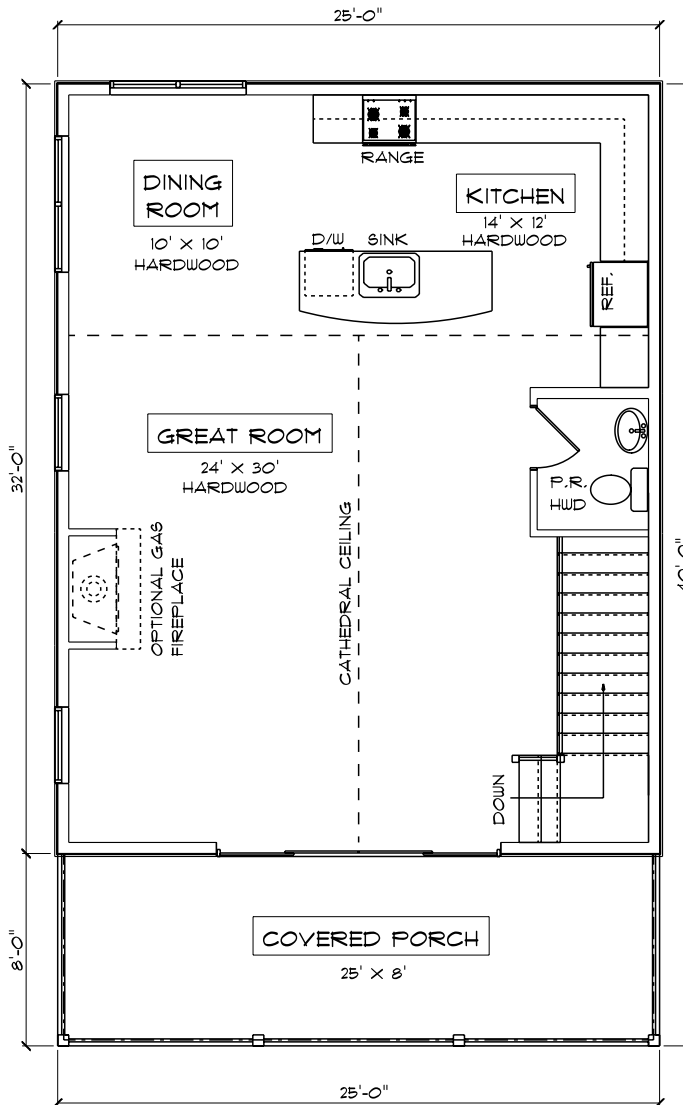
9' CEILINGS, 446 SQFT.

BAY VIEW



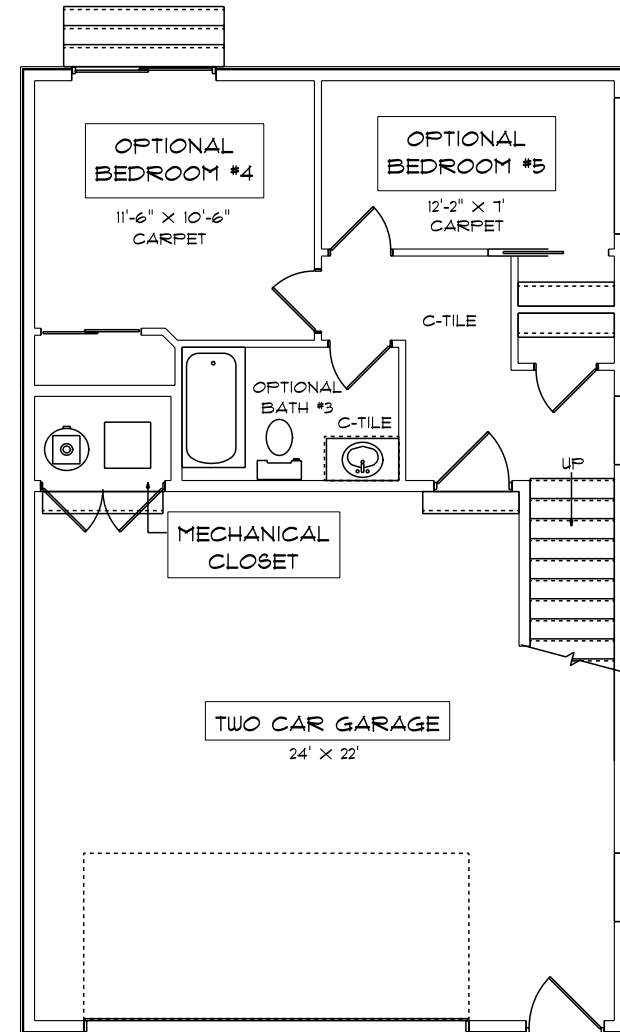
SECOND FLOOR

9' CEILINGS, 1,000 SQFT.



THIRD FLOOR

9' CEILINGS, 800 SQFT.



GROUND FLOOR (OPTIONAL)

9' CEILINGS, 446 SQFT.